


# MARINE BIOLOGY IN ALASKA

SUMMER 2016



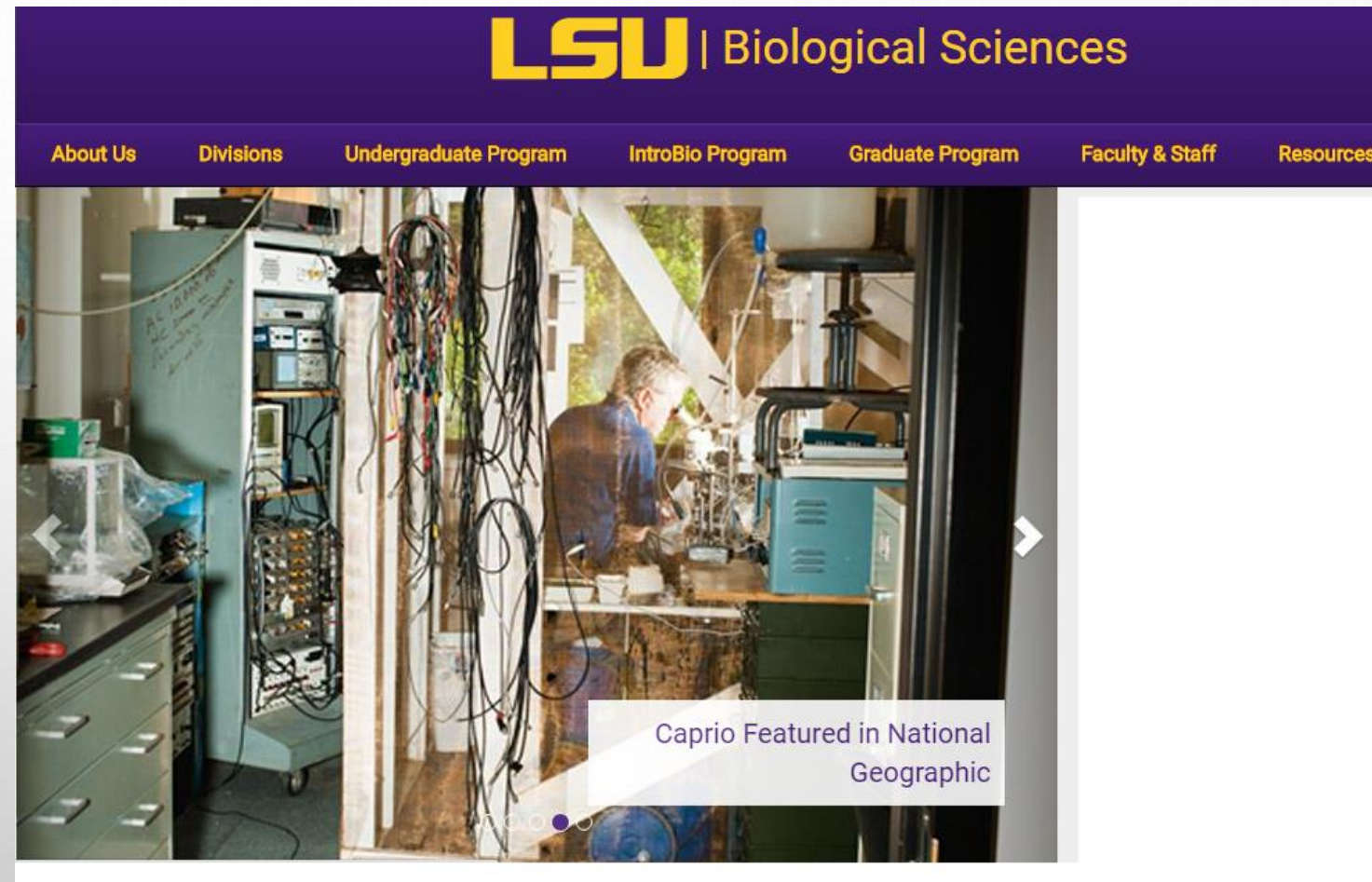


# DR. BARRY ARONHIME

- INSTRUCTOR – ECOLOGY, MARINE BIOLOGY
  - PH.D. 2010 PREDATOR-PREY INTERACTION IN OYSTER COMMUNITIES
  - TAUGHT 4263 (LAB) FROM 2008-2010 AS A TA
  - CURRENTLY TEACHING 3<sup>RD</sup> SEMESTER OF 4262 (LECTURE)
  - TA FOR MARINE BIOLOGY IN ALASKA IN 2009
- 

# DR. JOHN CAPRIO

- GEORGE C. KENT PROFESSOR
- CHEMORECEPTION IN FISH
- HAS TAUGHT NEUROBIOLOGY FOR ... A WHILE
- 8<sup>TH</sup> TIME TEACHING NEUROBIOLOGY IN ALASKA





# SCOTT KOSIBA – TEACHING ASSISTANT

- HELP WITH 3999, 4263 (LAB)
- ECOLOGY – TROPICAL PLANTS
- RANGER FOR US FOREST SERVICE
- FIELD TECH FOR COLORADO PARKS AND WILDLIFE
- TA FOR ECOLOGY LAB, INTRO BIOLOGY, INTRO BIOLOGY RESEARCH LAB





# BASICS

- JULY 15-AUGUST 8
- 6 - 7 CREDIT HOURS IN 3 WEEKS!
- BIOL 4262 (3) – MARINE COMMUNITIES. ARONHIME. PREREQUISITE – BIOL 2153
- BIOL 4263 (1) – MARINE COMMUNITIES LAB. ARONHIME/TA. PREREQUISITE – BIOL 2153
- BIOL 4177 (3) – NEUROBIOLOGY. CAPRIO. PREREQUISITES – BIOL 3090 OR 4160, CHEM 2262 OR 2462
- BIOL 3999 (3) – ARONHIME/TA. DEPARTMENTAL APPROVAL REQUIRED

# WEEKLY SCHEDULE

- BIOL 4262 – MONDAY THROUGH SATURDAY 8:30-10 AM
- BIOL 4177 – MONDAY THROUGH FRIDAY 10:30-12PM 4:30-6 PM, SAT 10:30-12
- BIOL 4263 – MTWF 1-4
- BIOL 3999 – TH 1-3, TBD
- SATURDAY AFTERNOON AND SUNDAYS ARE MOSTLY FREE





# ACCOMMODATIONS

- UNIVERSITY OF ALASKA SOUTHEAST
- JOHN PUGH HALL – 4 PERSON SUITES
- 3 MEALS/DAY PROVIDED M-F, BK & LUNCH SAT.
- NO MEALS SATURDAY NIGHT OR SUNDAY ANYTIME



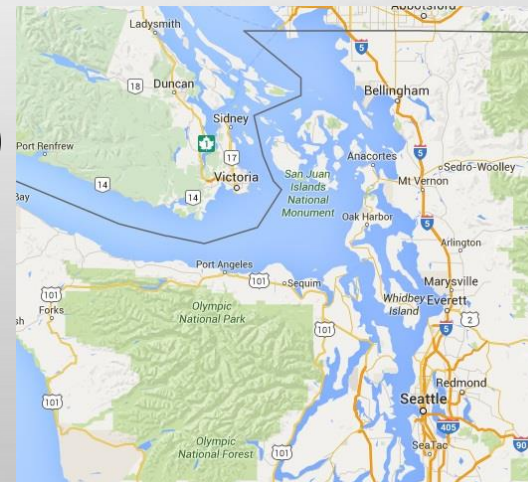
# UAS CAMPUS





# TRAVEL

- FLY TO SEATTLE (YOU)
- TRAIN TO BELLINGHAM, WA (YOU)
- LEAVE BELLINGHAM ON FERRY-FRIDAY PM-JULY 15<sup>TH</sup>
- FERRY TO JUNEAU (MEET AT FERRY STATION BY 2:30) TIME CHANGE (AK)
- ARRIVE IN JUNEAU ON MONDAY A.M.
- TWO VANS
- FLY OUT SUNDAY (AUGUST 7) OR MONDAY (AUGUST 8)



# MV COLUMBIA





# THE SOLARIUM





# SUNSHINE COVE – TUESDAY 7/19 AFTERNOON





# ALASKA STATE MUSEUM WEDNESDAY 7/20 AFTERNOON

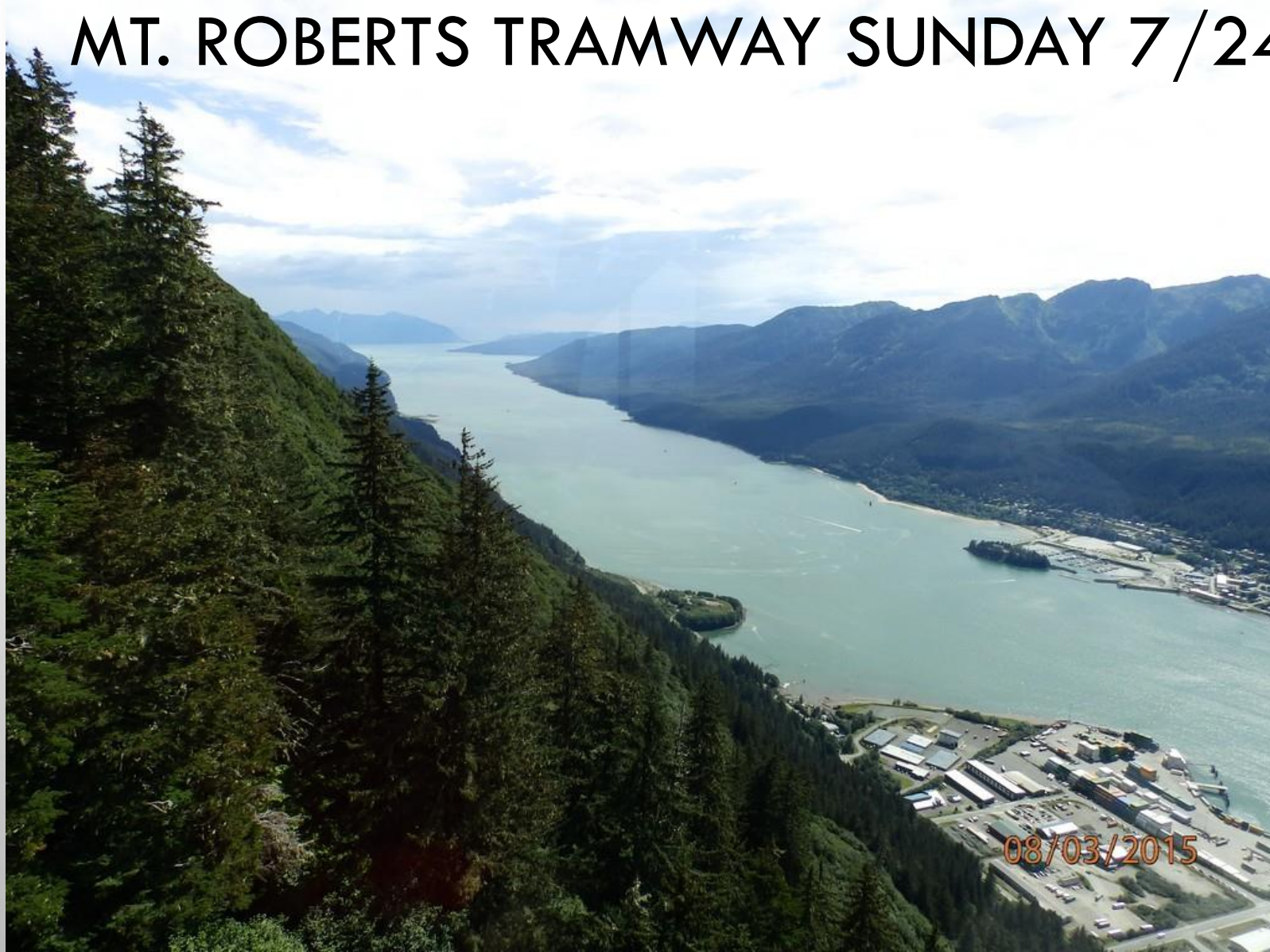


# ALL DAY FIELD TRIP ON BOAT TO TRACY ARM FJORD FRIDAY 7/22





# MT. ROBERTS TRAMWAY SUNDAY 7/24





# HIKE TO MENDENHALL GLACIER – WEDNESDAY 7/27 AFTERNOON



FRIDAY 7/29 – ORCA POINT





# NOAA NMFS - TBD



[http://www.nmfs.noaa.gov/stories/2011/04/28\\_alaska\\_research\\_institute\\_goes\\_green.html](http://www.nmfs.noaa.gov/stories/2011/04/28_alaska_research_institute_goes_green.html) Credit Chris Arend Photography

# OTHER FUN STUFF FOR YOUR FREE TIME

- HIKING
- KAYAKING
- FISHING
- ZIPLINING
- SHOPPING







08/05/2015





08/08/2015



# COSTS AND DEADLINES

- LSU TUITION AND FEES \$2,326 IN STATE, \$6,628 OUT OF STATE , PROGRAM FEE ~\$3,800
- AIRFARE TO SEATTLE AND FROM JUNEAU HOME; TRAIN TO BELLINGHAM; SPENDING MONEY- NOT INCLUDED
- \$500 DEPOSIT DUE JANUARY 30<sup>TH</sup>
- APPLICATION DEADLINE 4/1/16
- FEE BILL AVAILABLE 5/4
- FEE BILL DUE 5/19
- MEET IN SEATTLE, WA, JULY 15 AT TRAIN STATION IN MORNING FOR TRIP TO BELLINGHAM, WA, WHERE WE BOARD THE ALASKA FERRY THAT AFTERNOON.


# EXTRA

- GOLD CREEK
- BREWERY






# ITEMS TO BRING

- MEDICATIONS – EXTRA
  - BOOTS – WATERPROOF
  - RAINCOAT WITH HOOD – A GOOD ONE
  - SLEEPING BAG – “GOOD ENOUGH”
  - TOILETRIES FOR THE FERRY – BUY THE REST IN JUNEAU
  - MONEY FOR FERRY FOOD
  - MONEY FOR LAUNDRY
  - BACKPACK
  - LAPTOP
  - CAMERA AND MEMORY CARD
  - MONEY/CARDS
- 



# ITEMS NOT TO BRING

- LOTS OF TOILETRIES
  - EXPENSIVE SLEEPING BAG
  - 3 WEEKS OF CLOTHES – USE THE LAUNDROMAT
  - ILLEGAL SUBSTANCES
- 





# OTHER STUFF

- FOOD ALLERGIES, ASAP
  - OTHER SERIOUS MEDICAL NEEDS
- 

QUESTIONS?

PLEASE CONTACT DR. BARRY ARONHIME

CELL (502) 457-6635

OFFICE 578-9082

([BARONH1@LSU.EDU](mailto:BARONH1@LSU.EDU))

OR

DR. JOHN CAPRIO

CELL

(225) 205-8805

OFFICE 578-1741

([JCAP@LSU.EDU](mailto:JCAP@LSU.EDU))